

# AMERICAN RIVER TENT & EQUIPMENT RENTALS



**A.** 2-person dome tent



**B.** 4-person cabin-style tent on raised platform. 4 deluxe pads. **Mulberry, Acorn, Berry, Poppy.**



**D.** 5-person cabin-style tent on raised platform. Up to 5 cots, 5 deluxe pads, 5 deck chairs. **Eagle's Nest, Falcon's Nest.** Large verandas.

**C.** Front: 2-person cabin-style tent on raised platform. 2 cots, 2 deluxe pads, 2 deck chairs. **Hummingbird, Sparrow, Kingfisher.** (Berry is shown in back.)

## LUXURY CAMPING OPTIONS AT OUR SOUTH FORK CAMPGROUND!

<i>Raised platform tents on the South Fork campground have a great river view!</i>	MAX PEOPLE IN tent on pads WITH NO COTS	MAX PEOPLE in tent WITH COTS	1-DAY trip COST	2-DAY trip COST
<b>A.</b> 2-person dome tent	2	<i>not applicable</i>	\$20	\$25
<b>B.</b> 4-person cabin-style tent on raised platform. 4 deluxe sleep pads incl. <b>Mulberry, Acorn, Berry, Poppy</b>	4	<i>not applicable</i>	\$65	\$95
<b>C.</b> 2-person cabin-style tent on raised platform. 2 cots, 2 deluxe sleep pads and 2 deck chairs included. <b>Hummingbird, Sparrow, Kingfisher</b>	<i>not applicable</i>	2	\$95	\$125
<b>D.</b> Large 5-person cabin-style tent on raised platform. 5 cots, 5 deluxe sleep pads and 5 deck chairs incl. <b>Eagle's Nest, Falcon's Nest</b>	<i>not applicable</i>	5	\$145	\$175
<b>SLEEP KITS &amp; PADS</b>				
Sleep kit (sleeping bag and liner)			\$15	\$25
Deluxe sleep pad (single: 4"x72"x26")			\$10	\$15

### WETSUITS & BOOTIES

Wetsuit with booties and water-resistant spray jacket 1/4" thick, Farmer John style with full leg and no sleeve. *complimentary when needed*

Wetsuit Sizes	Youth	XXS	S	Med	Large	XL	XXL
Height	4'3"-4'8"	4'6"-5'1"	5'2"	5'2"-5'6"	5'7"-5'10"	5'11"-6'1"	6'-6'3"
Weight	70	70-85	90-105	105-140	140-175	175-230	205-230



Tents left to right: Eagle's Nest, Kingfisher and Poppy.

**South Fork Luxury Camping**—largest rafting campground on the South Fork. Beautiful raised tents 100' from river with views, hot showers, flush toilets, special "swimming holes" right in front of campground ...plus volleyball, horseshoes, covered pingpong area, walk-in campstore, beverage garden, coffee corner, delicious food...and more!  
**Visit [mariahwe.com](http://mariahwe.com) for an on-line store**



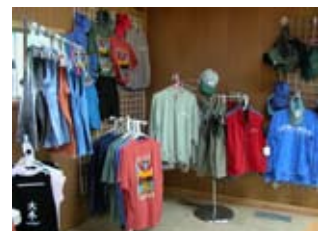
2-person cabin-style tent on raised platform. 2 cots, 2 deluxe pads, 2 deck chairs. **Hummingbird, Sparrow, Kingfisher**



Shows deluxe cot and deluxe pad included with C. & D. tent rentals.



Large verandas on both Falcon's Nest and Eagle's Nest.



Mariah's walk-in campstore at the South Fork Campground.



**AN UNFORGETTABLE OUTDOOR EXPERIENCE**  
 P.O. Box 1160, Lotus, CA 95651  
**800-4-MARIAH**  
[rafting@mariahwe.com](mailto:rafting@mariahwe.com)  
**[www.mariahwe.com](http://www.mariahwe.com)**